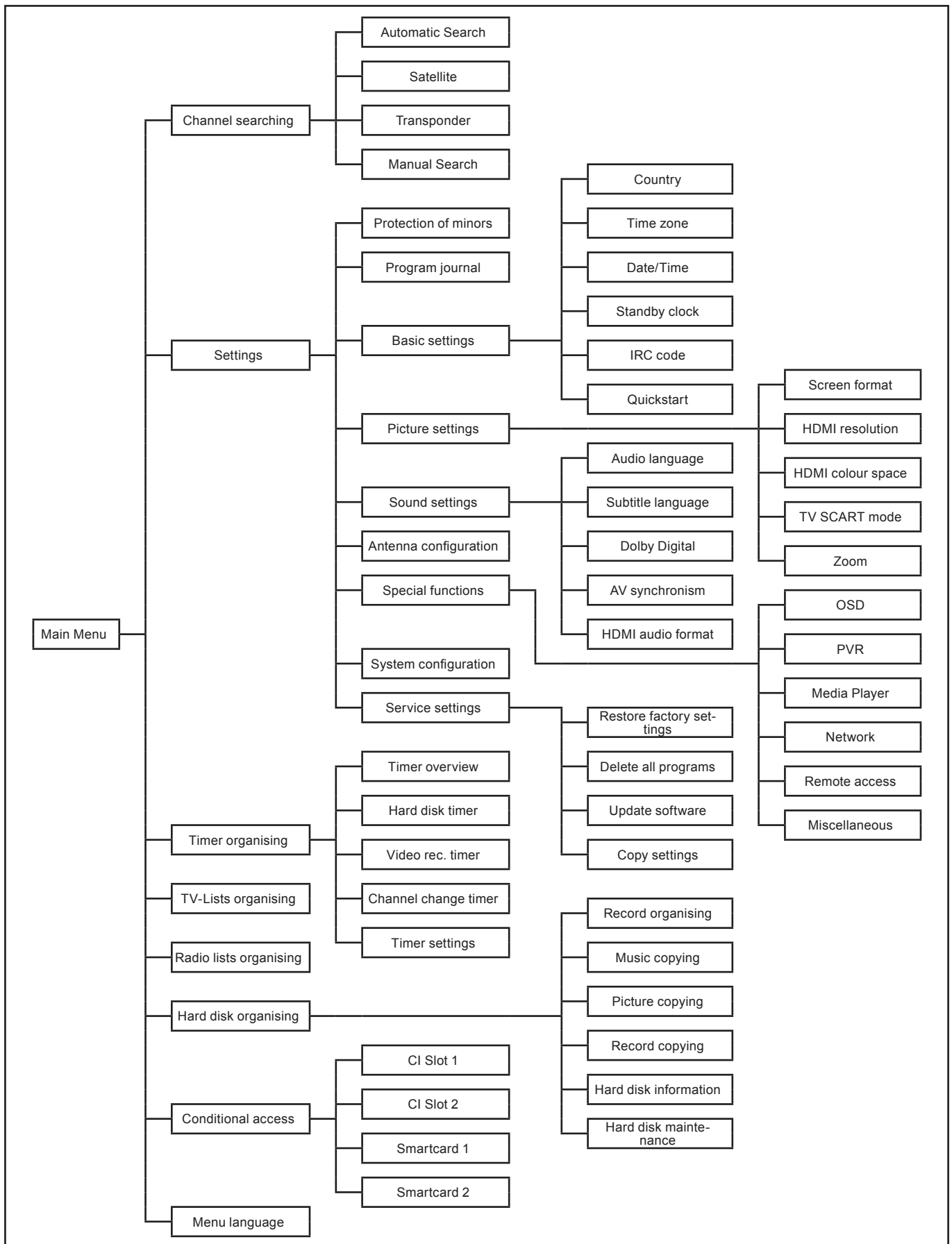




**Short instructions
TechniSat
DigiCorder Satellite receiver**



Your unit carries the CE symbol and complies with all relevant EU standards. Subject to change and printing errors. Correct as at 05/08
TechniSat and DigiCorder HD S2 X are registered tradehighlights of TechniSat Digital GmbH Postfach 560 54541 Daun www.technisat.de



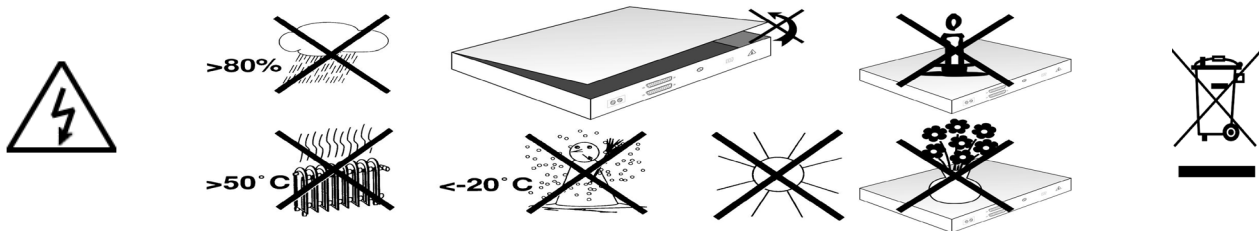
Contents:

Safety advice 3
When not in operation 4
Help:..... 5
Initial installation..... 5
Switching on and off..... 6
Channel selectios 6
Optional channels 7
Additional channel information 7
Volume control 8
TV/Radio switching 8
Access Electronic Programme Guide (EPG): 8
Hard disk operation 8
 Recording 8
 Playback 12
 Pause/Still picture 13
 Fast Forward and Rewind 13
 Slow motion 14
 Single frame progress 14
 MP3 Playback 14
 Playback/Reproduction of pictures 15
 Manage hard disk 16
Sort Channels / Configure Favourites List 19
Exit Menus 21

Disposal advice

The packaging for your unit consists entirely of recyclable material. Please sort the items appropriately, and sort them for disposal via your local waste “Disposal system”. Please note that spent batteries (from the remote control) as well as electronic components should not be disposed of in your household refuse, but in accordance with your local regulations (special waste, handing back to the outlet where purchased).

Safety advice



For your own protection, please read the safety instructions carefully before commencing operation of your new unit.

The manufacturer accepts no responsibility for damage caused by inappropriate operation, or by non-compliance with safety precautions.

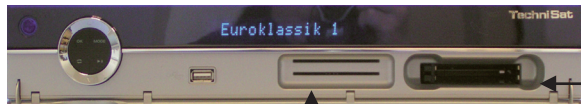
- > To ensure sufficient ventilation, position the device on a flat, even surface and do not place any objects on the lid of the device. This surface has ventilation slots that ensure heat can escape from inside the unit.
- > Do not place any burning objects, such as burning candles, on top of the unit.
- > Do not subject the unit to water spray or droplets, and do not place any objects filled with liquid, e.g. vases, on top of the unit.
- > The unit may only be operated in a temperate climate.
- > Never open the unit housing! You are in danger of receiving an electric shock. Any necessary repairs should be carried out only by qualified service personnel.

In the following cases, you should disconnect the unit from the mains power supply, and consult a qualified technician:

- > the mains cable or the mains plug is damaged
- > the unit was exposed to liquid, or liquid has run into the unit
- > in case of significant malfunction
- > in case of severe external damage

When not in operation

During an electrical storm, or when the unit will not be used for a lengthy period of time (e.g. while you are on holiday), disconnect the unit from the mains power supply.



Card reader for the smartcard:

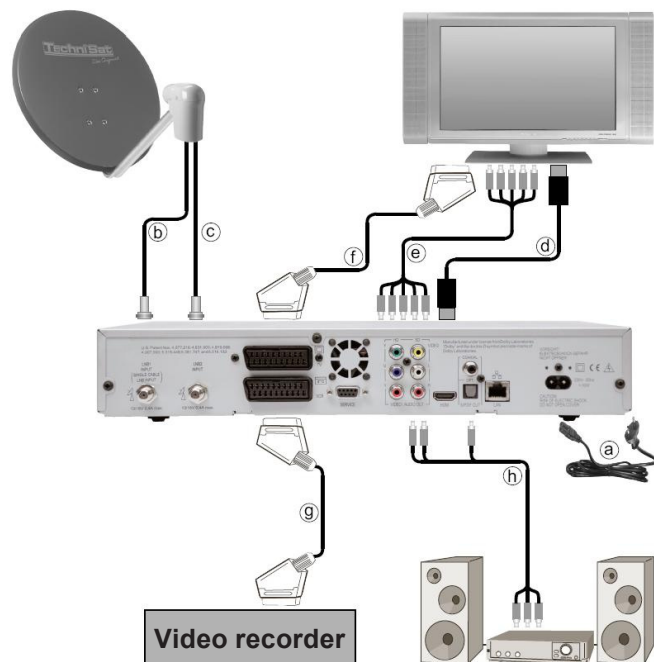
- > Slide the smartcard (with the gold chip facing down and in the intended direction of insertion) carefully until it is fitted into the card reader.

Inserting the CI module:

- > Follow the instructions of the manufacturer of the CI module and card.
- > Slide the desired smart card into the relevant CI module.
- > Now carefully slide the CI module into the appropriate slot.

Connecting the DVB receiver

- a. Mains connection
- b. Connecting LNB 1 with LNB Input 1 of the DVB receiver.
(Please note: When operating with an antenna signal, the LNB must be connected with the LNB Input 1.)
- c. Connecting LNB 2 with LNB Input 2 of the DVB receiver.
- d. Scart connection between the DVB receiver and the television set.
- e. Connecting from the component socket of the DVB Receiver to the component socket of the TV.
- f. Scart connection between the DVB receiver and the television set.
- g. Scart connection from a video player to the VCR Scart socket of the DVB receiver.
- h. Connecting the Audio outputs with a HiFi-/Surround system.



Operating with 2 antenna signals

To ensure the full functional scope of the digital receiver is usable, the receiver should be operated with two separate antenna signals / antenna connections, which are fitted identically.

- b, c Connect LNB Inputs 1 and 2 of the digital receiver via a suitable coaxial cable with your external unit.

Operating with 1 antenna signal

In exceptional cases, you may also operate the receiver with just one antenna signal. In this case, however, the recording and PIP functions will only be functional to a limited extent. b Connect the LNB Input 1 of the digital receiver via a suitable coaxial cable with your external unit.

Operation with a rotating antenna

b During operation with a rotating antenna, connect the DiSEqC engine (Level 1.2) with the LNB input 1.

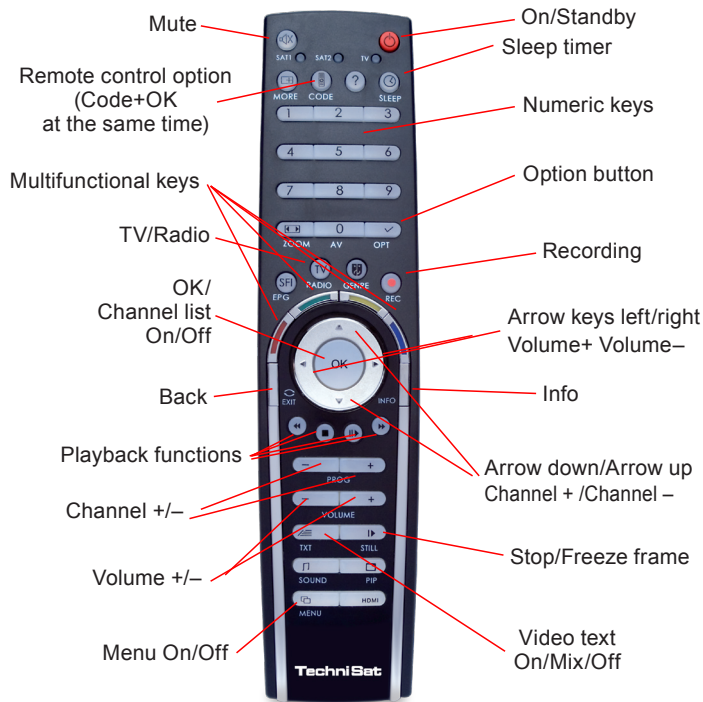
Connection to a television set

d Connect the receiver (HDMI output) and TV (HDMI input) via an HDMI cable.

If your TV is suitably equipped, it will automatically switch to the HDMI input when the digital receiver is switched on.

Or: e Connect the receiver (component output) and TV (component input) via a component cable.

Alternatively: f Use a SCART cable to connect the receiver (SCART socket TV) with the television set (SCART socket). If your television set is appropriately equipped, it will automatically switch to AV, and thus to satellite operation, when the digital receiver is switched on. Where applicable, it may be necessary to adapt the type of signal for your television set.



Important operating instructions

The operation of the digital receiver is simplified by the use of the “On Screen Displays”, which also serves to reduce the number of keys required on the remote control unit. All functions are displayed on the screen, and can be operated with a few keys. Related functions are combined in a “MENU”. The function selected is highlighted in colour. The “function keys” red, yellow, green and blue are indicated by colour bars in the bottom line. These colour bars represent different functions in the various menus, which will be activated by pressing the appropriate coloured key (multifunction key) on the remote control. The “Function keys” are only active when a brief description is displayed in the appropriate field.

Help:

Where available in the menus, pressing the blue function key will cause a help text to be displayed, pressing again will remove the text from the screen.

Initial installation

When switching on the unit for the first time, a start window will be displayed, with the installation assistant AutoInstall. Please follow the instructions displayed on screen. If you do not implement the initial installation, or if it is not completed, the receiver will commence operation with a standard pre-channelled configuration.

Antenna configuration

In this installation step you can adjust the digital receiver to the configuration of your antenna.

> If you wish to accept the standard antenna setting, use the arrow keys up/down to highlight the field Standard and confirm by pressing OK.

> If the configuration of your receiving installation does not correspond with the standard setting, highlight the field Manual and confirm by pressing OK.

DiSEqC

> If you have DiSEqC components in your receiving installation, highlight the field Activate and confirm by pressing OK

Position A/Option A

> Use the arrow keys up/down to highlight the satellite you wish to receive at the DiSEqC setting Position A/Option A and confirm by pressing OK.

Position B/Option A

> Use the arrow keys up/down to highlight the satellite you wish to receive at the DiSEqC setting Position B/Option A and confirm by pressing OK.

Position A/Option B

> Use the arrow keys up/down to highlight the satellite you wish to receive at the DiSEqC setting Position A/Option B and confirm by pressing OK.

Position B/Option B

> Use the arrow keys up/down to highlight the satellite you wish to receive at the DiSEqC setting Position B/Option B and confirm by pressing OK. In the next step, you should check on the correct configuration of your antenna.

> If you wish to accept the settings entered, use the arrow keys up/down to highlight the field Yes, and confirm by pressing OK.

Position A/Option B

> Use the arrow keys up/down to highlight the satellite you wish to receive at the DiSEqC setting Position A/Option B and confirm by pressing OK.

Position B/Option B

> Use the arrow keys up/down to highlight the satellite you wish to receive at the DiSEqC setting Position B/Option B and confirm by pressing OK. In the next step, you should check on the correct configuration of your antenna.

> If you wish to accept the settings entered, use the arrow keys up/down to highlight the field Yes, and confirm by pressing OK.

You can abort the initial installation at any time simply by pressing the red function key. Press the green function key to go back to the previous step in the installation procedure. Thus any entries made incorrectly can be quickly corrected. If you do not implement the initial installation, or if it is not completed, the receiver will commence operation with a standard pre-channelled configuration.

For daily use

Switching on and off

> Press the On/Standby key either on the digital receiver or the remote control to switch the receiver on.
> Press the same key again to switch the receiver off.

Channel selection

Using the channel up/down keys

> Use the channel up/down keys on the remote control or on the receiver to move up or down the list one channel slot at a time.

Using the numeric keys

- > You may use the numeric keys to enter the desired channel number. For example: 1 for channel 11, then 4 for channel 14
- 2, then 3, then 4 for channel 234

When entering a channel number consisting of several digits, you have approx. 3 seconds after pressing each number to complete the entry. If you wish to enter a number consisting of only one or two digits, you can speed up the switching procedure by holding the key down on the last digit.

Using the channel list:

- > Press the OK key.
- > Now use the arrow keys up/down to highlight the desired channel.
- > Press the OK key to display the highlighted channel.
- > Use the arrow keys up/down to move the highlighter in the list by one line at a time.
- > Use the arrow keys left/right to move back and forth in the list one page at a time.

Return to the last channel selected

- > Pressing the Back key on the remote control will take you back to the last channel selected.
- > Press the key again to return to the channel previously selected.

Optional features

Certain channels offer the possibility of optional channels. This function makes it possible for you, e.g. during a sports broadcast, to freely select from various camera perspectives (Form 1) or to select from a range of different sporting broadcasts (Bundesliga football).

If a programme includes optional features, this will be indicated by a notification.

- > To select one of the possible options, press the option button. A selection window showing the available options will be displayed.
- > Use the arrow keys up/down to highlight the desired option, and confirm by pressing OK.

Select start time

On certain channels, you can select individual films with different start times. With this in mind, these films are available on a round the clock basis at different start times. If a channel features selectable start time, this will be indicated.

- > To select one of the possible start times, press the option button. A selection window showing the start times offered will be displayed.
- > Use the arrow keys up/down to select the desired start time.
- > Confirm by pressing OK.

Provided the broadcast for the selected start time is available, you can view this at the desired time.

Additional channel information

Each time you change channels, an information box will be displayed briefly, showing the channel slot and the channel name of the channel selected. In addition, other channel properties will be indicated, such as for Video text, widescreen broadcasts and for encrypted channels. If a TV broadcast is available in **multiple languages** or with **multiple sound channels**, or if multiple radio channels are available on a single radio station slot, this will be displayed on screen. You may then proceed as follows to select a different language or a different audio channel:

- > Press the Option key. A list will now be displayed on screen, indicating the languages currently available.
- > Use the arrow keys up/down to highlight the desired language or the desired radio station and confirm by pressing OK. You may now listen to the channel in the language selected. Your digital receiver is also equipped to receive monaural channels.
- > Use the arrow keys left/right to choose between Mono channel 1 (), Mono channel 2 () and Stereo ().

Volume control

- > Adjust the volume of your digital receiver using the Volume + key to increase the volume, and Volume – to decrease the volume.
- > Press the mute key to switch the sound on or off.

TV/Radio switching

- > By pressing the TV/Radio button, you can switch between TV and Radio operation.

Access Electronic Channel Guide (EPG):

- > Press the SFI/EPG key on the remote control of the digital receiver.
The Electronic Channel Guide then appears on the screen. The channels you have selected, or those of the factory default settings, will be shown with their current channels. You can now also use the EPG function to obtain information on various channels. In addition, you may use the EPG functions to select a particular channel, to pre-select a channel, or to set a timer for a channel.

Exit EPG

- > Press either the Menu or the TV/Radio key to return to normal operation.

Hard disk operation

Recording

Warning!!!

Simultaneous receiving of two encrypted channels

Your receiver also allows you to receive two different encrypted channels simultaneously, using only one CI module and only a single valid Smartcard. However, this is only possible if you use a CI module with the "Dual-Decrypt" function (see details of the CI module manufacturer), both the desired channels are located on the same transmitter and the CI dual decryption function has been correctly selected.

Please ensure that the receiver has acquired the time. During operation, this is displayed in the Infobox and during standby operation on the display. If this is not the case, leave the receiver switched on to a selected channel for approximately 30 seconds, so that the receiver can acquire the current time.

1. Immediate recording

Select this recording type, to record the broadcast currently showing immediately with the touch of a button.

2. Time-controlled recording

This function can be used to switch your digital receiver on and off for the selected broadcast, in order to record onto the hard disk when you are away. The time can be channelled either manually or automatically via the EPG function.

3. Timeshift recording

The timeshift recording function makes delayed TV viewing possible. With this function, even while the recording continues, you can use a time-delayed play back.

Warning!

For technical reasons, it is not possible to receive two broadcasts, which are both transmitted in HD format, at the same time. To utilise all the recording facilities of your receiver, you should ensure it is connected via two independent antenna connections. This allows you to use the following combinations of recording and playback:

- Record one broadcast and at the same time, play back another broadcast (even from a different TV channel; 1 broadcast in HD format and 1 broadcast in SD format or 2 broadcasts in SD format) or a hard disk recording.
- Record two broadcasts (1 broadcast in HD format and 1 broadcast in SD format or 2 broadcasts in SD format) at the same time, even when these are received on different channels.
- Record two different broadcasts (even from different channels; Record 1 broadcast in HD format and 1 broadcast in SD format or record 2 broadcasts in SD format at the same time and play back a pre-recorded broadcast. If the receiver connection only has **one antenna connection** available, the available recording and playback functions will be correspondingly limited as a result.
- Record one broadcast and, at the same time, play back another broadcast of the same channel (1 broadcast in HD format and 1 broadcast in SD format or 2 broadcasts in SD format) or a hard disk recording.
- Record two **broadcasts of the same channel** (1 broadcast in HD format and 1 broadcast in SD format or 2 broadcasts in SD format) at the same time.
- Record two different **broadcasts of the same channel** (1 broadcast in HD format and 1 broadcast in SD format or 2 broadcasts in SD format) and play back a prerecorded broadcast.

Immediate recording

Manually start recording

Option 1

- > Switch on the program, which is showing the broadcast which you would like to record.
- > Press the record button to record the current broadcast. While the recording continues, the broadcast is still displayed on the screen.
- > To stop the playback of the current broadcast at a specific point, press the yellow function key Play/Pause. While the recording continues in the background, a still picture appears on the screen.
- > To continue the playback of this broadcast from this point, press the yellow function key Play/Pause again. You will now view the broadcast with a time delay relative to the live transmission (Timeshift), while the current broadcast is continually recorded in the background.

Option 2

- > If you have to interrupt the viewing of a broadcast e.g. due to a telephone call etc., you can halt the playback of this broadcast by pressing the yellow function key Play/Pause and start recording the current broadcast at the same time. While the recording starts in the background, a still picture appears on the screen.
- > To continue the playback of this broadcast from this point, press the yellow function key Play/Pause again. You will now view the broadcast with a time delay relative to the live transmission (Timeshift), while the current broadcast is continually recorded in the background.

Manually end recording

- > First press the OK button to end the recording.
- > Press the green function key to access the PVR navigator.
- > Use the arrow keys up/down to highlight the current recording and confirm by pressing OK.
- > Press the green function key Stop and a selection window appears.
- > Use the arrow keys up/down to select Save, to save the recording onto the hard disk, or Cancel, to cancel saving of the broadcast and confirm by pressing OK.

Automatically end recording

Option 1

- > Press the On/Standby key. Now a selection window appears, which should show the details of the current recording.
- > Use the arrow keys up/down to highlight the line with the desired action.
- > Confirm by pressing OK. The receiver completes recording of the broadcast and subsequently reverts to standby mode.
- > When you switch on the receiver before recording is over, a selection window appears, select whether you wish to view the current broadcast from the start, revert to live mode or switch to the current channel.
- > Use the arrow keys up/down to highlight the desired line and confirm by pressing OK. When Start is selected, the recording will continue in Timeshift operation.

Option 2

- > By pressing the Record button, a selection window appears.
- > Use the arrow keys up/down to highlight the line with the desired action, e.g. +1 hour, and confirm by pressing OK. The receiver will now record the channel(s) being broadcast on the channel selected for the time period selected, and will then automatically stop recording.

Timer recordings

With the help of the hard disk timer, you can record broadcasts on the integrated hard disk even when you are away. Your receiver is also equipped with video recorder timers as well as channel switching timers. In terms of their programming, these timers differ only in that the relevant type of timer is specified. In Standby operation, the hard disk and video recorder timers are shown by a clock symbol on the display. As described in this chapter, you can either program the timer manually or with the help of the EPG function.

1. Hard disk timer

This function can be used to switch your digital receiver on and off for the selected broadcast, in order to record onto the hard disk when you are away. If the receiver was switched on by means of the hard disk timer, this will be indicated by the message “_ PVR Timer” shown in the display. Some functions of the remote control (e.g. Accessing the main menu) are not operational.

2. Video recorder timer

When you use a video recorder timer, your digital receiver will be switched on and off for the channel selected, so that it may be recorded, e.g. on a video recorder, in your absence. If the receiver was switched on by means of the video recorder timer, this will be indicated by the message “_ VCR Timer” shown in the display. Some functions of the remote control are not operational. Be careful to note that the relevant recorder must also be channelled.

3. Channel change timer

If your receiver is in normal operating mode, it will switch to the programmed channel at the time selected. In contrast to the setting for a hard disk or video recorder timer, the remote controls remain fully functional, and the receiver will not be switched off at the end of the channel.

Manual timer programming

- > Press the Menu key to display the Main menu.
- > Use the arrow keys up/down to highlight the line Manage timer.
- > Confirm with the OK button, to access the Timer Menu
- > Use the arrow keys up/down to select the desired timer type.
- > Press the OK key to go to the entry window in order to channel a new timer event.

Channel –

- > Use the arrow keys to highlight the upper line of the menu.
- > Press the OK key.

- > In the selection window use the arrow keys up/down to select the desired source (TV or Radio) and confirm by pressing OK. Depending on the previous setting, either the TV or the radio channel list will now be displayed.
- > Now highlight the desired channel with the help of the numeric keys (channel input) and/or with the help of the arrow keys. Use the arrow keys up/down to move the highlighter around the list one line at a time and the arrow keys left/right to move the highlighter forwards or backwards one page at a time.
- > Press the OK key to accept a channel into the timer memory.

Date

- > Use the arrow keys to highlight the column Date.
- > Use the numeric keys to enter the date (in 4-digit format) on which the timer event is to take place.

Start

- > Use the arrow keys to highlight the column Start.
- > In this line, use the numeric keys to enter the starting time for the timer.

Stop

- > Repeat the steps as for "Start" in order to enter the stopping, or ending time (except in the case of channel change timers).

Repeat

- > Use the arrow keys to highlight the column Rep.
 - > Press the OK key.
- A selection window will be displayed, presenting various repeat options:
- 1x Timer once
 - T Daily repeat
 - 1 W Repeat once per week
 - 1-5 Repeat only on weekdays
 - 6-7 Repeat only on weekends
- > Use the arrow keys up/down to select the desired function.
 - > Press OK to accept the setting.

Accepting data into memory

- > When you have completed the programming, press the green function key Accept, to transfer the data to memory. After the data have been saved into memory, the timer overview appears.

Timer overview

- The timer overview function gives you an overview of all timer events already channelled.
- > To access the timer overview, first call up the main menu by pressing the Menu button.
 - > Use the arrow keys up/down to select the entry Manage timer and confirm by pressing OK. The sub-menu Manage timer will be displayed.
 - > Use the arrow keys up/down to highlight the line Set highlighter, confirm by pressing OK.

If, when programming, multiple timer events clash, meaning the timer cannot be correctly set, the overlaps are highlighted in red.

Change timer programming

- > To change an existing timer setting, access the timer overview function.
- > Subsequently, use the arrow keys up/down to highlight the timer event you wish to change.
- > Press the green function key Change to go to the settings of the highlighted timer. Make the changes as described.
- > Use the arrow keys up/down to highlight the additional window displayed: Type, before you save to the timer.
- > By pressing the OK key a window with the available timer types will open.
- > Now use the arrow keys up/down to select the desired timer type.
- > To accept the timer type, confirm by pressing OK.
- > Press the green function key Save, to save the data in storage.

Delete timer programming

- > To delete an existing timer setting, access the timer overview function.
- > Subsequently, use the arrow keys up/down to select the timer to be deleted.
- > Press the yellow function key Delete. A message will be displayed: "Do you really want to delete this timer?"
- > Use the arrow keys left/right to select Yes.
- > To delete the timer, confirm by pressing OK.

Channel new timer event

- > To channel a new timer event, use the arrow keys up/down to highlight a blank line in the menu Timer overview.
- > Press the green function key New to call up the input window to channel a new timer event.
- > Use the arrow keys up/down to highlight the additional window displayed: Type.
- > By pressing the OK key a window with the available timer types will open.
- > Now use the arrow keys up/down to select the desired timer type.
- > To accept the timer type, confirm by pressing OK.
- > When you have completed the programming, press the green function key Accept, to transfer the data to memory.

Timer settings (Preliminary or Follow-up time)

During the EPG timer programming, the receiver receives the data of the selected broadcast automatically from the EPG data. This allows the start and end time of the broadcast being recorded to be saved precise to the minute. However, there are often cases where the selected broadcast starts somewhat earlier or later than is specified. In this case, the recorded broadcast will miss out either the start or the end. To solve this problem, you can set preliminary or follow-up time in one minute steps. The timer now starts earlier at the specified preliminary time and ends at the set follow-up time later than specified in the EPG data.

- > Press the red function key Timer to open a selection window.
- > Use the arrow keys up/down to highlight the line Timer settings.
- > Confirm by pressing OK. A menu appears for adjusting the preliminary or follow-up time.
- > Use the arrow keys up/down to highlight the line Timer preliminary time or Timer follow-up time..
- > Use the numeric keys to enter the desired preliminary or follow-up time in minutes.
- > Press the green function key Save, to save the setting and to return to the timer overview.

Timeshift function

The timeshift function allows you the possibility to activate both playback and recording at the same time. This allows time-delayed TV viewing and allows you to view the start of the recording and thus jump through sections that have already been recorded. At the same time, the recording of the live signal of the broadcast continues.

- > To access a specific section of a current recording, the functions Play and Pause are available, as well as Fast Forward and the jog shuttle.
- > Pressing the Info button causes the Infobox to appear with a status bar displayed, which shows the playback and recording duration.

Setting highlighters while recording

- > Press the Record key to open a window showing the functions available.
- > Use the arrow keys up/down to highlight the line Set highlighter, confirm by pressing OK. A highlighter will now be set at the current position. Continue in this manner to set highlighters at all desired places. highlighters can also be placed even during a recording and in the Manage hard disk menu.

Playback

You can access hard disk recordings via the hard disk (PVR-) navigator. These can be accessed in several ways. Depending on whether you are operating the TV or radio, a list appears with all the TV or radio recordings contained on the hard disk. After access via the navigator, the playback of the highlighted recording already starts.

Accessing the PVR navigator:

The PVR navigator can be accessed in the following ways:

During normal operation

- > Press the OK key to open the channel list navigator.
- > Press the green function key PVR to switch to the PVR navigator.
- or
- > Press the green function key directly to open the PVR navigator.

During recording/playback of a recording

- > During a recording/playback of a hard disk recording, you can access the PVR navigator by pressing the OK button.

Play back hard disk recordings

- > First access the PVR navigator.
- > Use the arrow keys up/down to select the recording you wish to play back. Completed as well as current recordings can be selected.
- > To start the playback, confirm by pressing OK. The indication "Playback_" will be displayed.

Recording information

- > First access the PVR navigator.
- > Use the arrow keys to highlight the recording for which you would like to see further information.
- > Pressing the yellow function key Status allows information on the highlighted recording to be displayed.
- > Press the Back button to return to the PVR navigator.

Pause/Still picture

- > To halt the playback of a recording (still picture), during playback, press the yellow function key or the Still picture button. The symbol "Pause _II" will be displayed.
- > Press the relevant key again to restart the playback from the same position.

Fast Forward and Rewind

To access a specific section of a recording, your PVR includes variable speed Fast Forward and Rewind functions.

- > During playback, press the blue function key for Fast Forward or the red function key for Rewind. The display indicates "Fast Forward ___" or "Rewind ___". The recording will now be run at 4x normal speed in the desired direction.
- > Press the blue or red function key again and the speed increases to 16x. The display indicates "Fast Forward ___" or "Rewind ___".
- > Press the blue or red function key again and the speed increases to 64x. The display indicates "Fast Forward ___" or "Rewind ___".
- > By pressing the blue or red function key again, you can jump forward or backward in 10 minute segments.
- > Once the desired portion of the recording has been reached, you can access normal playback by pressing the yellow function key.

Jogshuttle function

In addition, your receiver features a jog-shuttle function, which allows you to go to a specific place in your recording very quickly and precisely. This can be used as follows:

- > While in playback mode, press the key Jogshuttle on/off (Freeze frame) to go to the jog-shuttle mode. The playback of the recording will be stopped (freeze frame/pause). The symbol "_II" will be displayed.

Fast Forward and Rewind

- > By pressing the arrow keys right/left, you can adjust both the speed and direction of playback. In the process, the respective playback mode will be displayed.
- > While this is displayed, press the arrow keys _____ or _____, right or left, to jump forwards or backwards in 10 minute steps.

Slow motion

- > By pressing the right arrow key once, the recording is played back at slow motion speed and the indication "I_" appears on the display.

Single frame progress

- > Press the arrow key up to display the next frame in a forwards direction and press down for display the previous frame in the backward/reverse direction.

Create image

- > By pressing the Record button, an individual image is transferred onto the hard disk. In this way, you can access and manage created images.

Setting highlighters

- > As described before, go to the place in your recording at which you wish to insert a highlighter.
- > Press the record button to set a highlighter at the actual position. Continue in this manner to set highlighters at all desired places. Highlighters can also be set during Record mode as well as in the menu Manage hard disk.

Jump to highlighters

During the playback, it is possible to jump directly to specific sections of the recording, where you have positioned highlighters.

- > Pressing the key Option will open a window with the existing highlighters. In addition, the indication "Current" appears. This highlights the actual playback position on the recording.
- > As soon you use the arrow keys up/down to highlight a highlighter, the playback begins at this point.
- > By pressing the OK button, the window is closed and you switch to normal playback.

End playback

- > To exit playback, press the green function key. The playback will be ended and your receiver will revert to normal operation. In the process, the receiver logs the position on the recording at which playback was ended. When you restart playback of this recording, it will automatically revert to the point at which you previously stopped it.

MP3 playback

You can use your receiver to display created images, as well as files, which are saved in MP3 format on the hard disk or on a device connected via the USB socket. The USB device should be formatted using the file system FAT 32.

- > During normal operation, open the PVR navigator with the green function key.
- > Press the blue function key NAV Menu.
- > Use the arrow keys up/down to highlight the line Music.
- > By pressing OK, the selection of the source medium is now displayed.
- > Use the arrow keys up/down to select the source from which you wish to play back the MP3 files.
- > By pressing OK, a list now appears with the MP3 files contained on the hard disk or on the USB device.
- > Use the arrow keys up/down as applicable to initially highlight the folder, which contains the desired MP3 file, and confirm by pressing OK.
- > Use the arrow keys to select from the list the MP3 file you wish to play first, and confirm by pressing OK. The file selected will now be played. Thereafter the other files located on the same source medium, will be played automatically.

Skipping titles/tracks

- > By pressing the arrow keys up/down, you can jump forwards or backwards one track.

Pause

- > Press the yellow function key to stop the playback operation (Pause).
- > Press the key again to resume playing the file from this position.

Fast Forward and Rewind

- > During playback, press the blue function key Fast Forward or the red function key Rewind, several times if applicable, to advance or rewind the track at 4x, 16x or 64x normal speed.
- > During the 64x speed, press the blue or red function button to go forwards or backwards in 10 minute steps.
- > Once the desired section has been reached, you can access normal playback by pressing the yellow function key.

Stop/End playback

- > To stop playback and revert to normal operation, press the TV/Radio button.

Display control

To avoid the need to switch on the television set when navigating the MP3 playback, the latter can be controlled via the display. An MP3 file is shown on the display with its respective filename. A folder will be indicated by a display of square brackets, e.g. [Popmusic]. The hard drive will be displayed as hard drive and a USB device will be indicated as USB-device1, USB-device2 etc..

- > While the device is in standby mode, press the language selection button. The device now switches itself on and automatically sets the navigator to the music category.
- > Use the arrow keys up/down to select the source from which you wish to play back the MP3 files, and confirm by pressing OK. If no USB device is connected to the system, only the internal hard drive of the receiver will be available as a source.
- > Now, first use the arrow keys up/down to select the folder containing the desired MP3 file, and confirm by pressing OK.
- > Use the arrow keys up/down to select from the list the MP3 file you wish to play first, and confirm by pressing OK. The file selected will now be played. Thereafter the other files located on the same source medium will be played automatically.

Playback/reproduction of pictures

You can use your receiver to display created images, as well as files, which are saved in JPG format on the hard disk or on a device connected via the USB socket. The USB device should be formatted using the file system FAT 32.

- > During normal operation, press the green function key to open the PVR navigator.
- > Press the red function key Category to open an additional window.
- > Use the arrow keys up/down to highlight the line Pictures and confirm by pressing OK.
- > Use the arrow keys up/down to select the source from which you wish to view the picture files, and confirm by pressing OK. A list showing the picture files available on the hard drive and the USB device will be displayed.
- > Use the arrow keys up/down as applicable to initially highlight the folder, which contains the desired image file, and confirm by pressing OK.
- > Use the arrow keys up/down to select from the list of JPG files, which you wish to view and confirm with OK. The picture selected will now be displayed in large format.

Show next/previous picture

- > Press the arrow keys up/down to skip to the next or previous picture.

Rotate image

- > By pressing the blue or red function key, the image can be rotated in a clockwise or anticlockwise direction.

Manage hard disk

- > Call the Main menu by pressing the key Menu.
- > Use the arrow keys up/down to highlight the line Timer settings.
- > Confirm by pressing OK. The menu Manage hard disk will be displayed.
- > Use the arrow keys up/down to move the highlighter within the menu, and to change the individual items as indicated.

Manage recordings

This menu allows you to manage your recordings.

- > Press the OK button, to access the recording submenu. A list appears of the recordings contained on the hard disk.
- > Use the up/down arrow keys to select the desired recording.

Delete

- > To delete the highlighted recording, press the red function key Delete.
- > To actually delete the recording, use the arrow keys left/right to highlight the field OK and confirm by pressing OK.

Parental control

Recordings, which are unsuitable for children and young people, can be locked. These recordings can then only be played back when a 4 digit PIN code is entered. To ensure the parental control function is active, this option (found under menu/settings/child safety) must be activated.

- > To lock the highlighted recording, press the green function key. The selected recording will now be highlighted with the child safety symbol to show it is locked.

Editing

- > By pressing the yellow function key Edit, you can access the menu for editing the highlighted hard disk recording. The hard disk recording will be played back in a preview window. In addition, any highlighters included in this recording will be displayed. As standard, the highlighters for the **Start** and **End** are present. In addition, a yellow status bar is also shown, which indicates the current playback position and the overall duration of the recording.
- > To jump to a section of the recording indicated by a highlighter, highlight the desired highlighter using the arrow keys up/down and confirm with OK.

Functions

- > By pressing the green function key Menu, a window opens with the available functions for editing the recordings.
- > Use the arrow keys up/down to highlight the desired function, and confirm by pressing OK.
- > Use the arrow keys to highlight the field OK and accept the name.

Delete portion

Your PVR also allows you to delete selected section (e.g. unwanted sections of commercials) from an existing recording.

Please note:

The deleted sections will be irretrievably removed from the hard disk.

To delete a specific section, proceed as follows: The beginning and end of the section that is to be eliminated must be indicated by two highlighters.

- > Mark both the beginning and end of the section to be deleted with one highlighter respectively.
- > Now use the arrow keys up/down to set the highlighter indicating the beginning of the section to be deleted. The section to be deleted will now be indicated in red on the progress indicator as well as in the overview of existing highlighters.
- > Now press the green function key Menu and use the arrow keys up/down to highlight the line delete section.
- > Press OK to display a section window.
- > To actually delete the section, use the arrow keys right/left to highlight the field OK and confirm by pressing OK.

Extracting a section

This function allows you to copy a section of a recording. A new recording is generated, consisting only of this section. The recording from which this section is copied remains in memory unchanged. To extract a section, proceed as follows: The beginning and end of the section that is to be copied must be indicated by two highlighters.

- > Here, highlight both the beginning and end of the portion to be deleted with one highlighter respectively.
- > Now use the arrow keys up/down to set the highlighter indicating the beginning of the section to be copied. The section to be copied will now be indicated in red on the progress indicator as well as in the overview of existing highlighters.
- > Now press the green function key Menu and use the arrow keys up/down to highlight the line extract section.
- > Press OK to display a selection window.
- > To actually copy the section, use the arrow keys right/left to highlight the field OK and confirm by pressing OK. The highlighted section will now be copied to a new recording. Depending on the size of the section, this may take several minutes.

Splitting a recording

This function allows you where, for instance, two successive channels were recorded as a single recording, to split these into two individual recordings. Each recording will be split at the point indicated by the relevant highlighters. Recordings can be split as follows:

- > Place a highlighter at the beginning of the section to be extracted.
- > Now use the arrow keys up/down to highlight the point from which the entire recording should be split.
- > Now press the green function key Menu and use the arrow keys up/down to highlight the line split recording.
- > Press OK to display a selection window. This will show information relating to the two recordings to be created by the split.
- > To actually split the recording, use the arrow keys left/right to highlight the field OK and confirm by pressing OK.

Rename recordings

Your PVR extracts information from the transmitted data stream concerning the names of the broadcast channels. If a single recording contains multiple broadcasts, all the names of the recorded broadcasts are compiled and saved internally. To rename a recording, proceed as follows:

- > Now press the green function key Menu and use the arrow keys up/down to highlight the line Rename.
- > Confirm by pressing OK. A list of the possible titles will be displayed.
- > Use the arrow keys up/down to select the title for which you wish to change the name and confirm by pressing OK.
- > In the subsequent section window, use the arrow keys right/left to highlight the field OK and confirm by pressing OK.
- > If you want to assign a specific name to the recording, use the arrow keys up/down to select the line New.
- > By pressing the OK button, a virtual keyboard is displayed, with which you can input the new name.

Enlarge video

To facilitate the control of a desired section of a recording, the video image of the recording can be enlarged.

- > Press the green function key Menu to do so and use the arrow keys up/down to highlight the line Enlarge video.
- > By confirming with OK, the video image is displayed in enlarged form.
- > To reduce the size of the video image again, proceed likewise, highlighting the line Shrink video.

Managing music/pictures

You can use your receiver to play back musical tracks in MP3 format and images in JPG format. To copy the relevant data onto the hard disk, connect a USB device, on which the MP3s or JPGs are contained, to the USB socket of the receiver.

Please be careful to note, that only MP3 files can be managed from the Music menu, and only JPG files from the Images menu.

- > Call up the menu Manage hard drive as described above.
- > Use the arrow keys up/down to highlight the line Copy music or Copy images, in order to manage the relevant files.
- > Confirm by pressing OK. In the subdivided menu, the left half (set-top box) shows the files and folders present on the hard disk. The right side (USB device) shows the files and folders, which are contained on the connected USB device.
- > Use the green function key to switch from one USB device to another or the red function key set-top box to do the same for the hard disk. The first file or the first folder of the list is highlighted.

Copy

The Copy function allows you to make a copy of the highlighted file or highlighted folder onto the hard disk or the USB device. The original file or folder also remains in place.

- > With the help of the arrow keys up/down, highlight the file or folder, which you would like to move.
- > Press the blue function key Functions to open a window showing the functions available.
- > Use the arrow keys up/down to select the line Copy and confirm by pressing OK.
- > To copy the selected file or folder, now press the yellow function key Copy. The highlighted file or folder is now copied and subsequently also appears in the left or right half of the menu.

Highlighting blocks of channels

To highlight several files simultaneously, proceed as follows:

- > Press the OK key to go to the selection mode. The highlighted file will be indicated with a cross on the left side.
- > You may now use the arrow keys up/down to highlight the previous or following files as well.
- > After you have highlighted the desired files in this way, press the yellow function key Copy, to copy these files.

Please be careful to note, that collective copying of folders is **not** possible!

Move

The Move function allows you to move the highlighted file or folder from the source medium (e.g. a USB device) to the target medium (e.g. the hard disk). The moved file or folder will subsequently only be found on the target medium.

- > Use the red function key set-top box or the green function key USB device to select the source, in which the file or folder to be moved is contained.
- > With the help of the arrow keys up/down, highlight the file or folder that you wish to move.
- > By pressing the blue function key Functions, the function window opens.
- > Use the arrow keys up/down to highlight the line Move and confirm by pressing OK.
- > To move the highlighted file or folder, now press the yellow function key Move.
- > To move multiple files at the same time, highlight those desired and subsequently press the yellow function key Move.

Delete

To delete files or folders, proceed as follows:

- > Use the red function key set-top box or the green function key USB device to select the source, in which the file or folder to be deleted is contained.
- > With the help of the arrow keys up/down, highlight the file or folder that you wish to delete.
- > Press the blue function key Functions to open a window showing the functions available.
- > Use the arrow keys up/down to highlight the line Delete and confirm by pressing OK.
- > To delete the highlighted file or folder, now press the yellow function key Delete.
An selection window appears, to confirm whether you really wish to delete the selected files.
- > Use the arrow keys left/right to highlight the field Yes and confirm by pressing OK. Or, highlight No, and confirm by pressing OK to cancel the operation. The files will now be deleted.

Hard disk information

> By pressing the OK button, information concerning the integrated hard disk is displayed.

Hard disk properties

> Press the OK button, to see an overview of the filled capacity of the hard disk and the number of recordings it contains.

Checking hard disk

- > To carry out a check of the hard disk, use the arrow keys right/left to highlight the field Check.
- > Press the OK button and confirm by using the arrow keys right/left to highlight the field OK and confirming with OK, to start the checking. The hard disk will now be checked. The result will subsequently be displayed.

Formatting the hard disk

By formatting the hard disk, the file system is renewed. This may be necessary when checks of the hard disk reveal any error.

Note!

When formatting, the contents of the hard disk will be permanently deleted, meaning all the recordings and multimedia files (e.g. MP3s) will be lost.

- > To format the hard disk, use the arrow keys right/left to highlight the field Format.
- > Press the OK button and confirm by using the arrow keys right/left to mark the field OK and confirming with OK, to start the formatting.

Please note!

The device may only be operated with the originally integrated hard disk. Otherwise, this could lead to damage to the device.

With this in mind, never open the device and attempt to exchange the hard disk, since this will render all warranties null and void.

Sort Channels / Configure Favourites List

This chapter describes how you can change the pre-programming of your digital receiver as well as the Favourites channel list in accordance with your own preferences. This function is also required to sort new found channels into the channel list after a channel scan has been performed. In this regard you should know the following: your receiver is equipped with two channel lists, the **Favourites list** and the **Total list**. The Favourites channel list includes all the channels you have accepted into the list according to the procedure described below. The Total list includes all channels.

Calling up channel list management

To customise the Favourites list, proceed as follows:

- > Press the Menu key to display the Main menu.
- > Use the arrow keys up/down to highlight the line Manage TV lists, in order to work on the TV list, or Manage Radio lists, in order to work on the radio list.
- > Confirm by pressing OK. The channel list management required to work on the respective Favourites list will be displayed. Favourites list (TV or radio list). The Favourites list will be displayed on the right half of the screen. This is now active, with the currently selected channel being highlighted. The alphabetically sorted Total list will be displayed on the left half of the screen. The Total list includes all available channels.
- > Press the red function key to move the highlighter to the Total list. This is now active.
- > Press the red function key again to open a selection window. Here you have the option of sorting the Total list according to various selection criteria (e.g. all channels, all free-to-air, all new channels, all channels found, all English channels, etc.) or sorted by Provider.
- > Use the arrow keys up/down to select the desired channel list (e.g. Total list).
- > Confirm by pressing OK. An additional selection window will now be displayed.
- > Now use the arrow keys up/down to specify the selection criterion according to which the Total list is to be sorted.

Select e.g. All broadcasters, to display all available channels in the overall list or All new, to display only newly found channels since the last search was carried out or All English, to display only English language channels.

- > Confirm by pressing OK. Now, depending on your selection, a channel list containing e.g. all channels, all new or all English-language channels will be displayed. Channels already included in the Favourites list are indicated by a check-highlighter.
- > Press the red function key Channels resp. the green function key TV List to switch back and forth between the Favourites list and the Total list. The currently active list will be indicated by a blue highlighter.

Adding channels to the Favourites list

To accept channels from the Total list into the Favourites list, call up the channel list manager as described in Point, and go to the Total list.

- > Press the blue function key Functions. A selection window showing the available functions will be displayed.
- > Use the arrow keys up/down to highlight the item Add.
- > Confirm by pressing OK.
- > Use the arrow keys up/down to highlight a channel you wish to accept into the Favourites list.
- > Press the yellow function key Add to accept the highlighted channel into the Favourites list.

Highlighting blocks of channels

To highlight several channels simultaneously, proceed as follows:

- > Press the OK key to go to the selection mode. The highlighted channel will be indicated by a cross on the left.
- > You may now use the arrow keys up/down to highlight the previous or following channels as well.
- > When you have highlighted your selected channels in this way press the yellow function key. Add, to include the highlighted channels in the Favourites list.

Deleting channels

To delete channels from the favourites list, access the channel list management. The Favourites list will be displayed and active.

- > Press the blue function key Functions. A selection window showing the available functions will be displayed.
- > Use the arrow keys up/down to highlight the line Remove.
- > Confirm by pressing OK.
- > Use the arrow keys up/down to highlight a channel you wish to delete from the list.
- > Press the yellow function key Delete. The inquiry "Remove channel/s from the list ? appears.
- > Use the arrow keys left/right to highlight Yes or No.
- > Confirm by pressing OK. The channels deleted in this manner will, however, remain in the Total list, and can be added to the Favourites list again at any time.

Deleting from the Total list

To remove channels from the Total list, proceed as described above. However, after calling up the channel list management, press the red function key Channels to first switch to the Total list, then select the function Delete.

Sorting channels

To sort the order of channels in the Favourites list according to your preferences, call up the channel list manager. The Favourites list will be displayed and active.

- > Press the blue function key Functions. A window showing the available functions will be displayed.
- > Use the arrow keys up/down to highlight the line Sort.
- > Confirm by pressing OK.
- > Use the arrow keys up/down to highlight the channel, which you wish to place at another position of the list.

- > Now press the yellow function key Sort. A double arrow will appear next to the channel selected.
- > Now use either the arrow keys up/down or the numeric keys to place the channel in the desired position in the channel list.
- > Press the yellow function key Sort to enter the new position of the channel into memory.

Exit Menu

Press the TV/Radio key to return to normal operation.

Further Information in more detail can be found on the Internet at the site www.technisat.com

